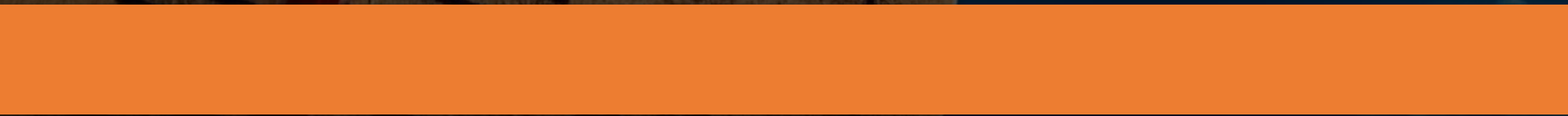


# UK Climate Change A Graphical Depiction



# All Data downloaded from the Met Office Website



<https://www.metoffice.gov.uk/pub/data/weather/uk/climate/datasets/Tmean/date/UK.txt>

<https://www.metoffice.gov.uk/pub/data/weather/uk/climate/datasets/Rainfall/date/UK.txt>

Monthly figures for:

Temperatures & Rainfall

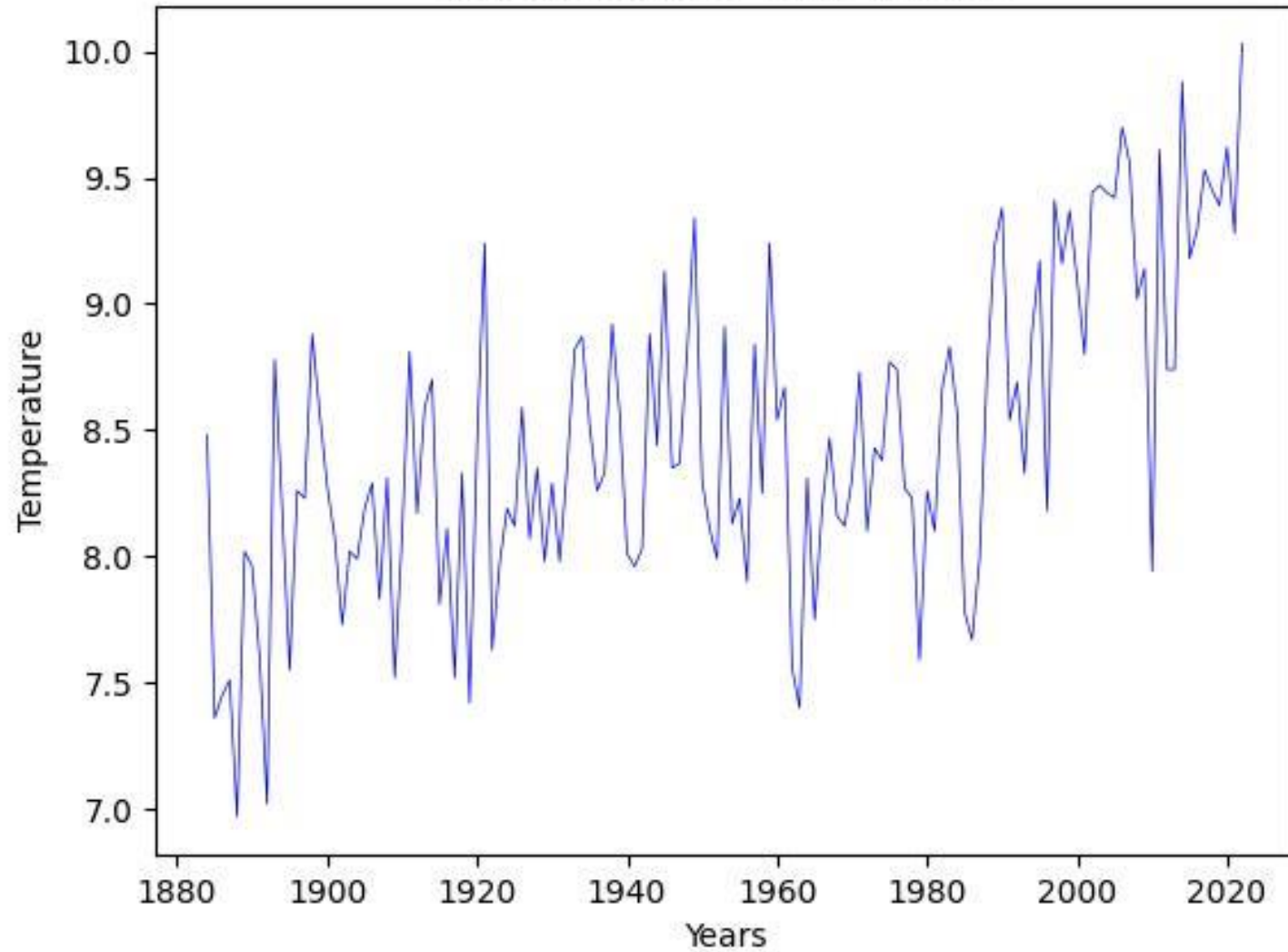
Since Records Began

from HadUK-Grid 1km gridded climate data from land surface network  
 Office National Climate Information Centre  
 Monthly, seasonal and annual mean air temperature for UK  
 started 01-Aug-2023 10:44

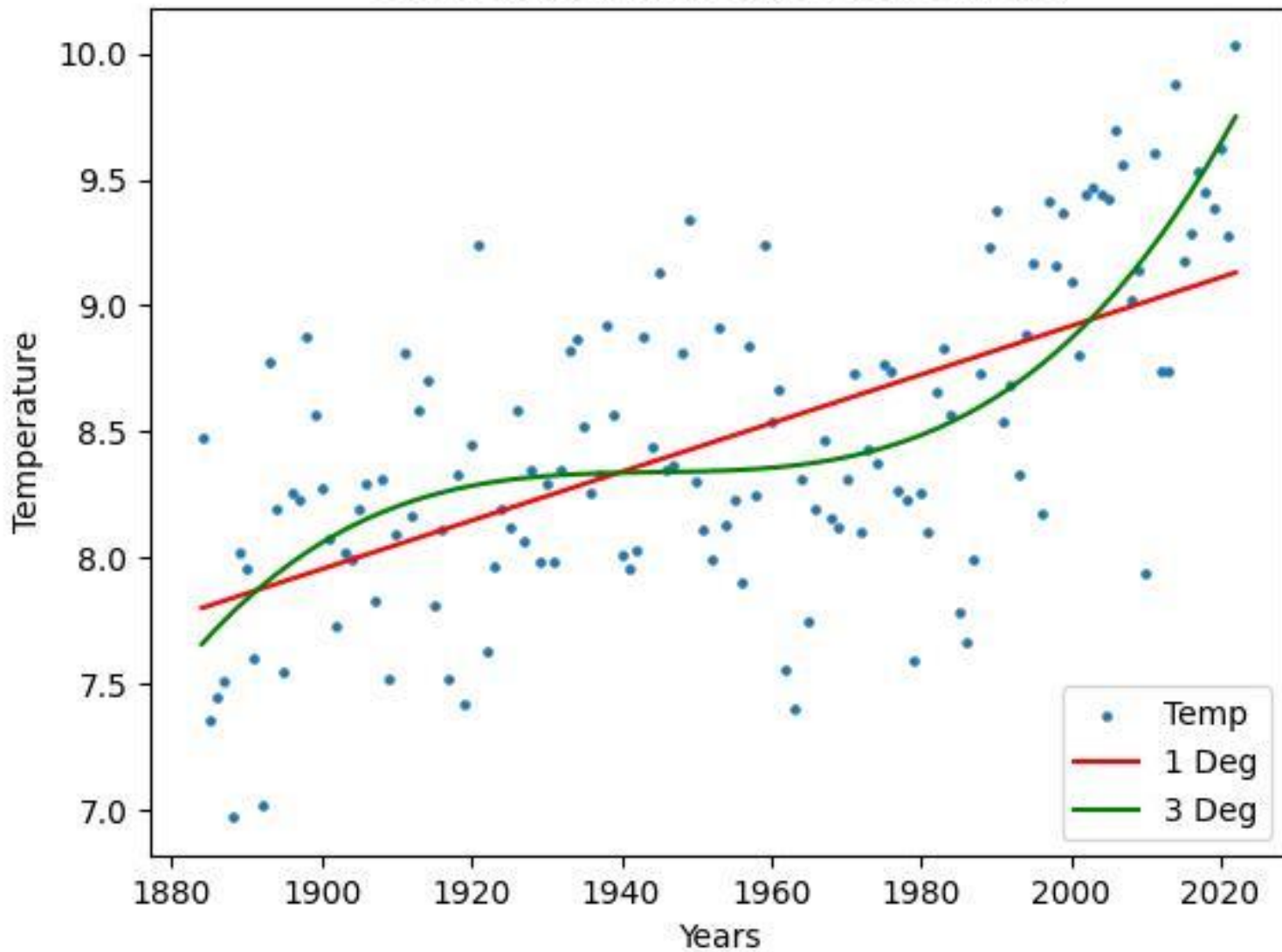
Areal values from HadUK-Grid 1km gridded climate data from land surface network  
 Source: Met Office National Climate Information Centre  
 Monthly, seasonal and annual total duration of bright sunshine for UK  
 Areal series, starting in 1910  
 Last updated 01-Aug-2023 10:44

year	jan	feb	mar	apr	may	jun	jul	aug	sep	oct	nov	dec	win	spr	sum	aut	ann
1910	50.9	72.2	130.3	122.8	190.5	177.5	148.6	128.8	120.5	74.5	67.0	29.9	---	---	---	---	---
1911	46.1	60.4	102.0	126.2	208.1	205.1	250.4	201.1	163.2	86.2	56.6	29.9	---	---	---	---	---
1912	33.5	53.5	89.7	195.6	153.8	129.7	133.3	80.5	163.2	74.5	67.0	29.9	---	---	---	---	---
1913	29.3	52.0	100.9	115.5	161.2	170.9	133.0	145.5	110.8	91.6	56.6	29.9	---	---	---	---	---
1914	28.6	59.1	93.7	202.3	157.4	207.3	133.0	144.1	110.8	86.2	56.6	29.9	---	---	---	---	---
1915	36.0	65.3	102.7	147.5	212.9	207.3	133.0	144.1	110.8	86.2	56.6	29.9	---	---	---	---	---
1916	40.1	66.0	69.1	162.6	156.7	209.7	133.0	144.1	110.8	86.2	56.6	29.9	---	---	---	---	---
1917	28.0	54.5	91.1	131.1	172.1	137.4	144.3	135.4	158.7	88.1	33.5	19.4	136.4	443.7	454.9	262.0	1313.5
1918	42.4	50.2	107.1	139.6	184.2	208.3	144.3	154.0	150.4	73.0	58.4	32.0	123.8	436.3	656.5	656.5	1542.1
1919	40.0	56.9	98.9	121.1	210.5	205.1	187.3	126.4	103.8	69.6	69.9	36.6	100.7	377.6	343.5	306.0	1124.8
1920	43.2	68.7	103.9	95.4	176.5	187.3	184.0	138.8	116.2	101.3	44.7	27.1	119.7	453.4	525.6	251.6	1190.5
1921	30.2	62.6	100.1	182.4	208.6	208.3	156.2	123.4	125.1	68.0	41.5	32.1	137.8	463.2	501.5	282.7	1386.0
1922	38.4	65.3	97.8	159.6	209.1	182.7	123.4	127.4	111.5	62.5	48.0	32.2	133.2	388.4	435.6	294.0	1386.9
1923	42.5	46.8	105.6	128.9	201.1	182.7	138.2	138.3	105.3	101.3	31.6	32.2	114.6	394.2	534.9	218.1	1180.3
1924	41.3	50.4	130.7	133.9	158.5	126.7	138.2	122.6	142.5	102.9	32.2	36.2	136.4	430.9	527.9	259.0	1314.5
1925	38.7	60.4	94.3	150.9	146.0	161.4	162.5	164.7	101.4	108.7	55.8	36.2	128.5	430.4	526.7	255.7	1338.7
1926	35.5	41.8	91.0	120.7	150.7	248.2	169.2	118.8	137.5	90.2	53.1	32.9	144.1	375.9	448.4	294.9	1381.1
1927	40.1	56.0	107.3	146.2	172.3	183.2	166.7	135.3	111.5	82.2	46.2	32.4	129.0	491.1	564.0	257.1	1229.5
1928	47.9	76.9	74.6	130.0	178.6	170.7	171.2	173.8	114.5	85.7	78.9	38.0	136.6	466.4	564.0	301.1	1481.9
1929	38.8	50.2	166.9	152.2	160.5	183.8	131.4	146.7	117.0	96.6	78.9	35.5	121.8	393.0	443.5	263.2	1309.3
1930	44.4	66.0	103.4	119.9	211.0	197.8	193.9	146.7	96.9	90.5	50.1	43.8	129.7	410.6	453.9	299.5	1273.8
1931	53.5	57.5	131.1	110.5	157.0	213.8	183.5	154.9	96.9	90.5	50.1	43.8	129.7	410.6	453.9	299.5	1273.8
1932	46.5	69.3	105.1	128.9	160.7	213.8	183.5	154.9	96.9	90.5	50.1	43.8	129.7	410.6	453.9	299.5	1273.8
1933	54.7	72.5	143.0	126.4	145.7	115.1	151.5	157.8	150.2	92.7	55.6	39.6	134.6	395.9	449.4	239.9	1227.1
1934	46.9	79.3	106.0	117.2	175.7	207.4	122.2	146.2	100.0	96.9	53.1	35.5	135.7	384.0	550.1	279.1	1227.1
1935	42.2	53.5	109.4	126.6	142.0	195.7	122.2	146.2	100.0	96.9	53.1	35.5	135.7	384.0	550.1	279.1	1227.1
1936	37.6	69.6	109.4	117.2	175.7	207.4	122.2	146.2	100.0	96.9	53.1	35.5	135.7	384.0	550.1	279.1	1227.1
1937	35.7	62.8	64.7	132.4	215.7	194.6	224.3	190.3	157.6	80.5	48.1	30.8	159.0	530.1	532.6	305.9	1246.7
1938	37.3	59.6	102.4	157.6	178.5	180.3	226.9	146.5	141.6	75.2	44.3	40.6	139.1	380.3	520.4	301.3	1363.9
1939	40.6	67.7	115.1	162.7	183.6	162.2	128.9	162.5	141.6	72.2	51.1	35.0	146.6	402.3	513.5	257.7	1290.2
1940	53.7	36.4	92.5	156.9	158.9	170.4	118.2	159.3	98.0	73.0	40.0	21.0	167.8	360.4	412.3	253.7	1210.0
1941	37.8	60.9	103.7	112.4	183.3	213.7	130.7	166.5	129.7	96.7	53.1	42.6	161.1	411.5	587.3	232.9	1213.8
1942	33.4	53.1	104.0	105.8	199.2	264.4	122.6	156.4	106.7	76.3	47.3	40.8	116.7	398.9	565.4	283.8	1444.8
1943	39.2	72.6	75.8	205.4	153.2	191.9	151.2	150.7	123.6	92.5	54.1	32.4	139.3	457.5	556.5	250.0	1365.3
1944	32.2	61.6	118.9	143.1	201.0	191.4	175.8	144.3	141.3	99.5	53.7	38.6	129.4	376.7	468.5	241.9	1402.2
1945	46.4	61.6	113.3	130.0	213.1	182.3	160.4	110.4	124.2	92.6	42.1	32.8	150.4	436.6	446.9	260.1	1214.8
1946	45.7	70.8	99.8	173.4	164.2	170.9	107.2	128.2	120.4	76.4	41.3	34.4	122.9	432.8	457.4	252.9	1285.9
1947	45.4	43.0	78.7	133.6	165.5	156.6	156.8	122.1	122.1	84.9	52.6	30.3	133.1	415.4	575.3	261.7	1322.6

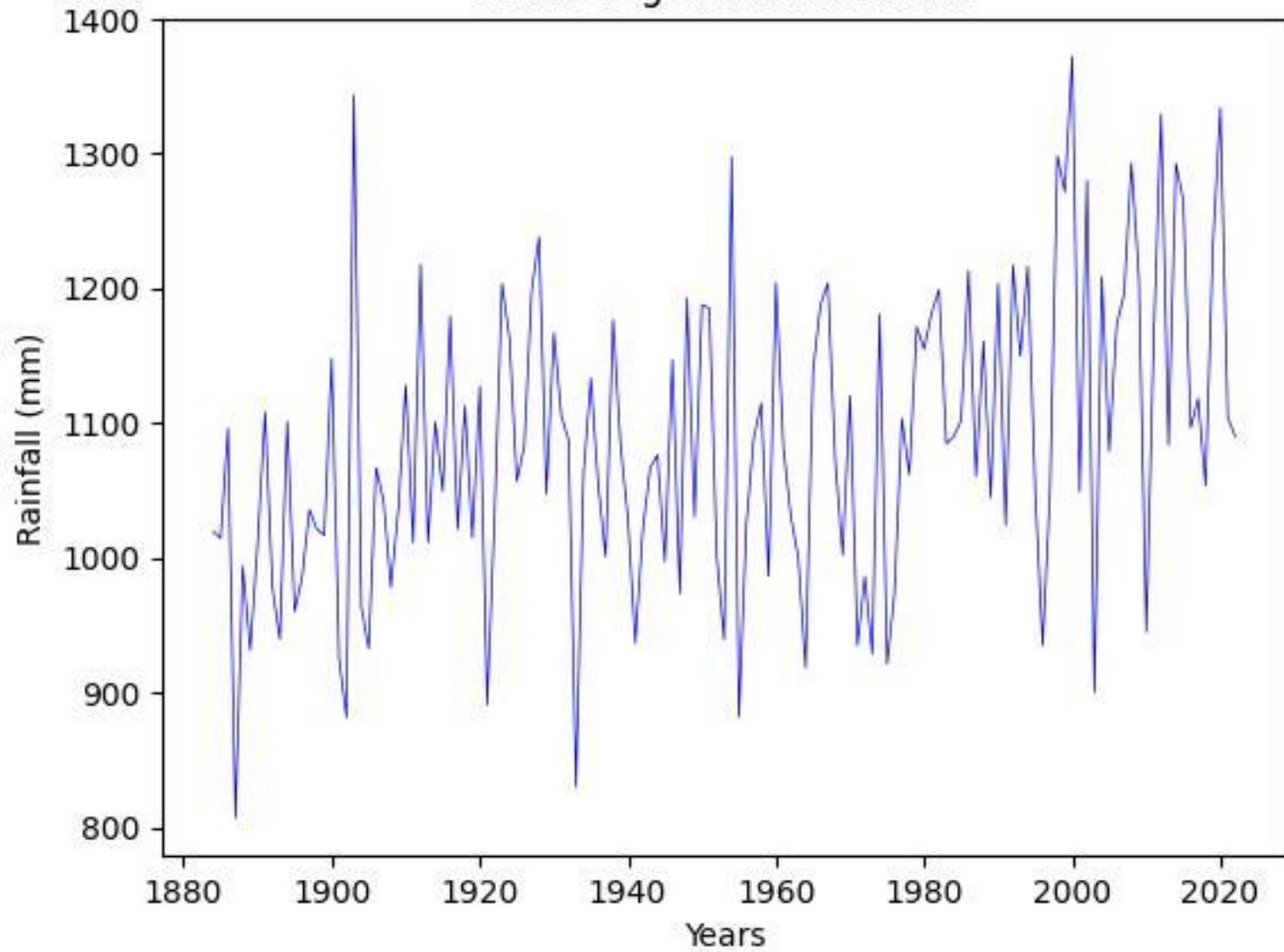
UK Mean Annual Temperatures



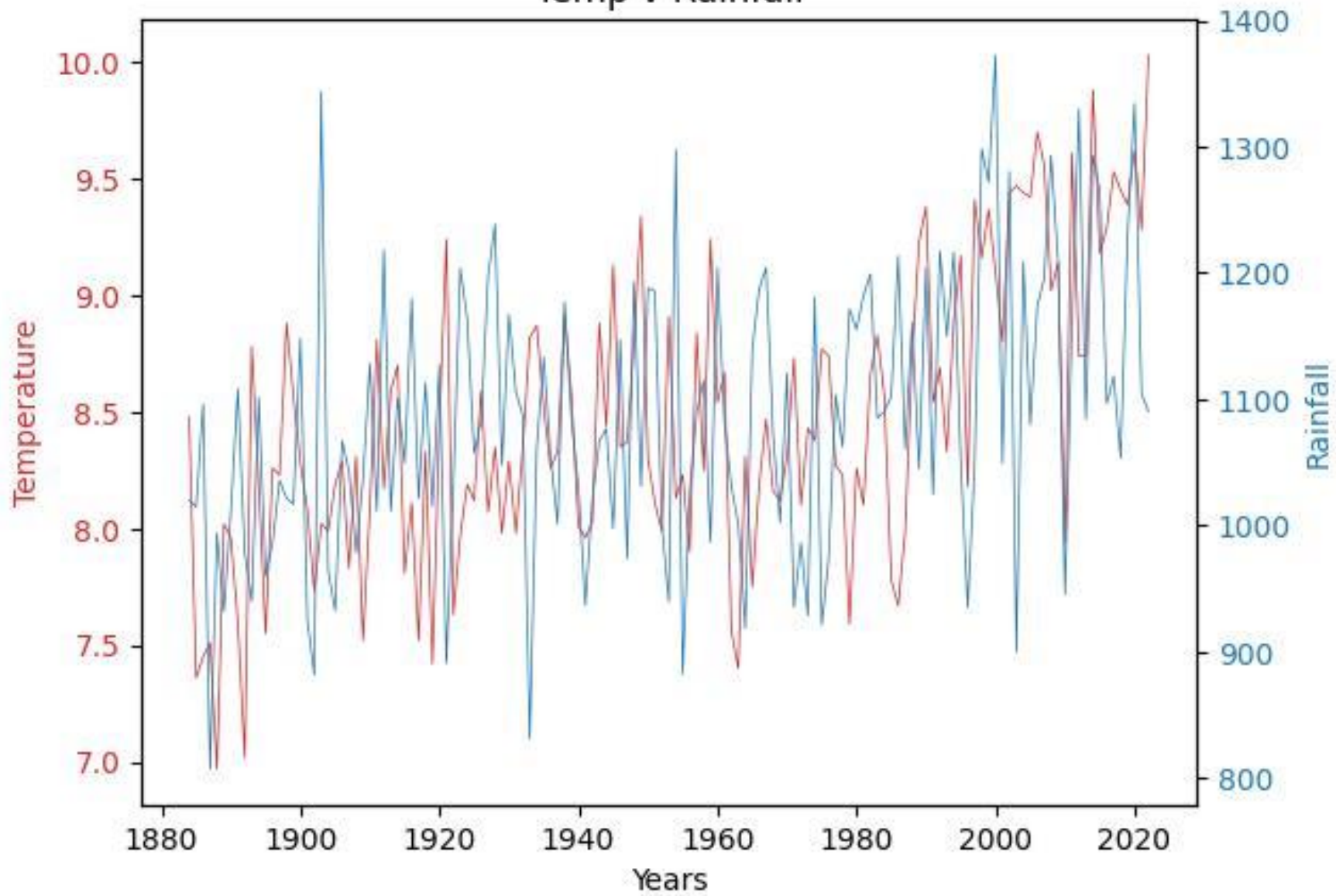
### UK Mean Annual Temperature Trend



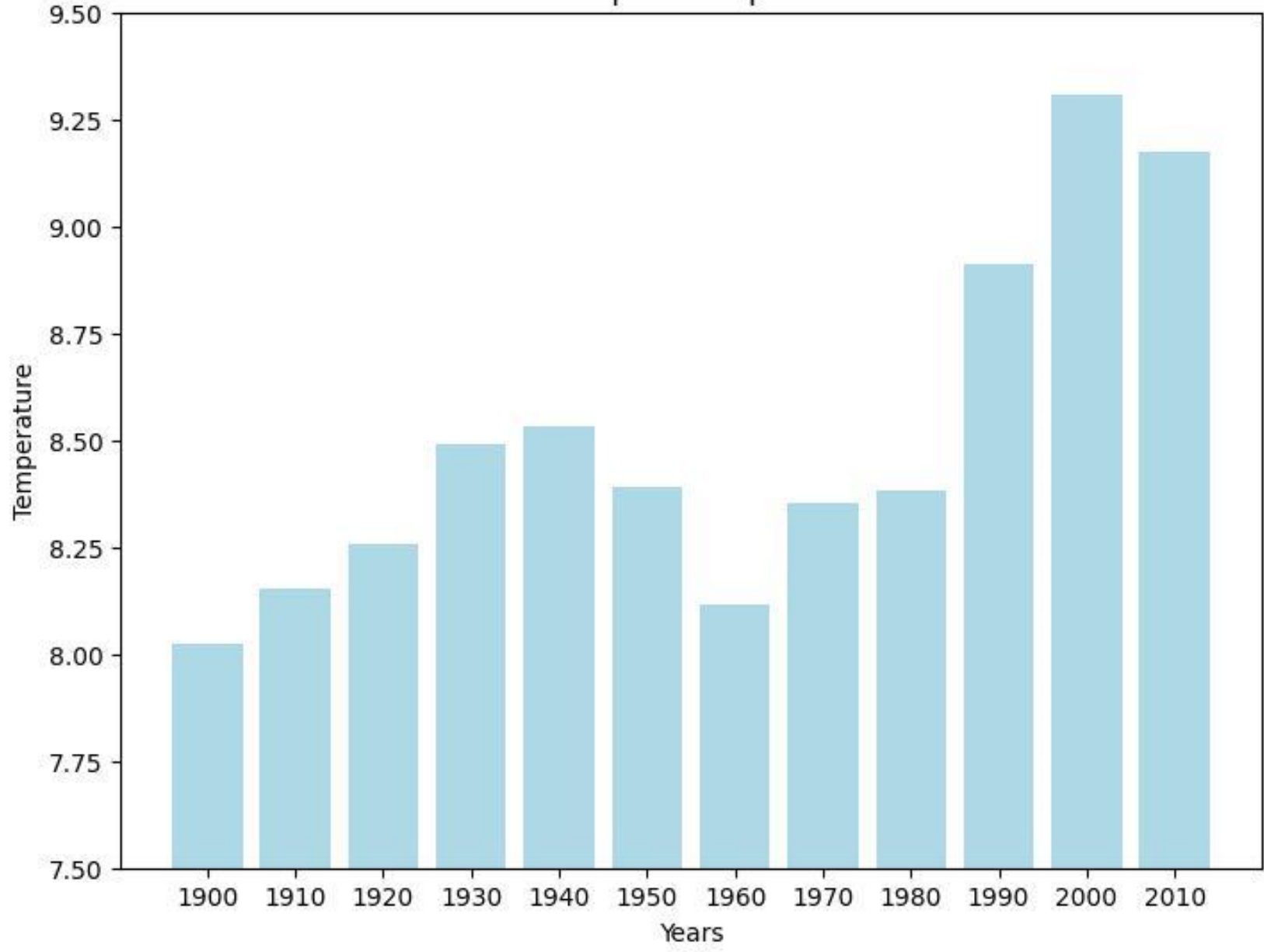
UK Average Annual Rainfall



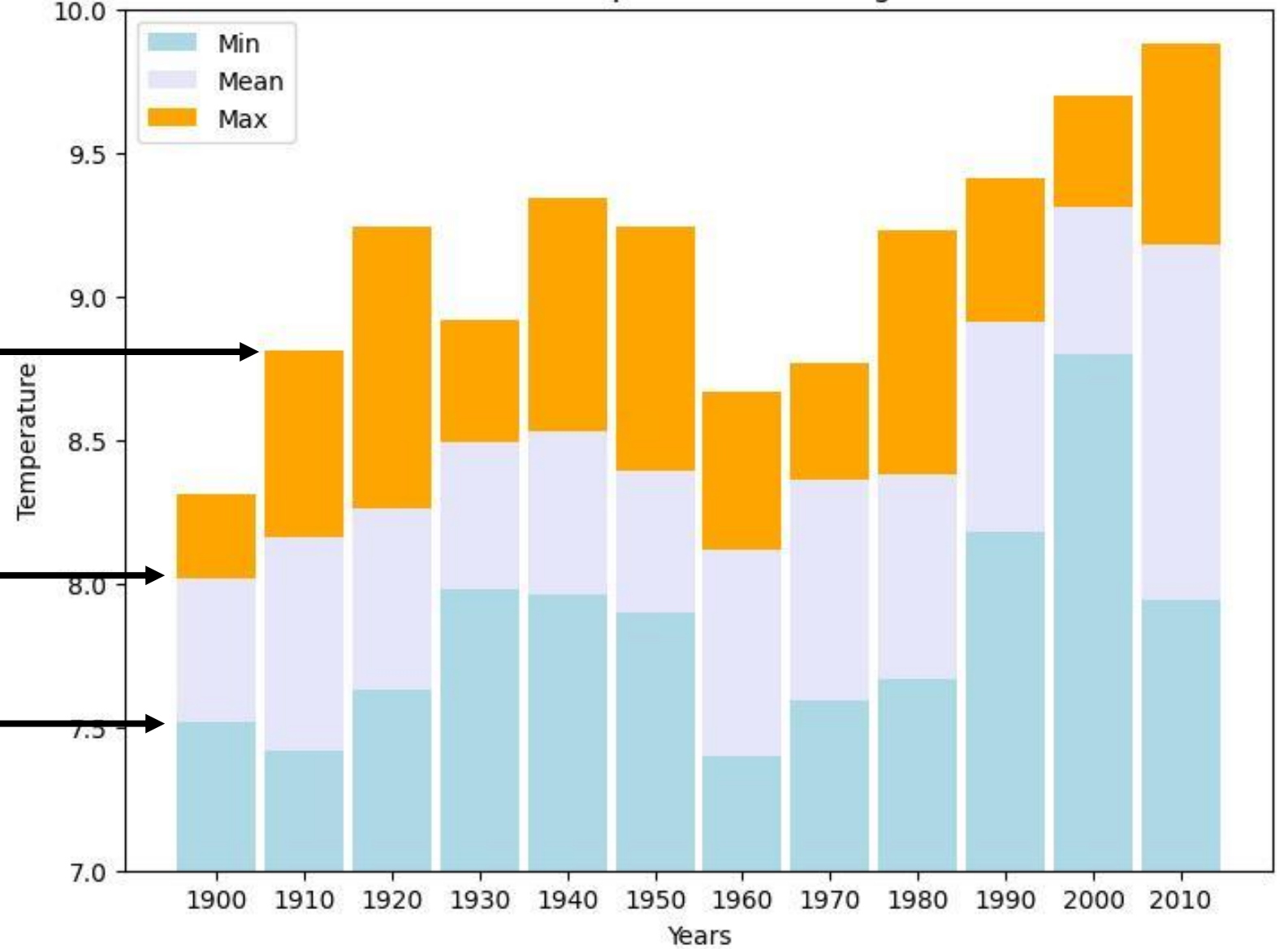
Temp v Rainfall



Mean Temperature per Decade



Mean Decade Temperatures Showing Min & Max



Maximum Mean Annual Temp in Decade



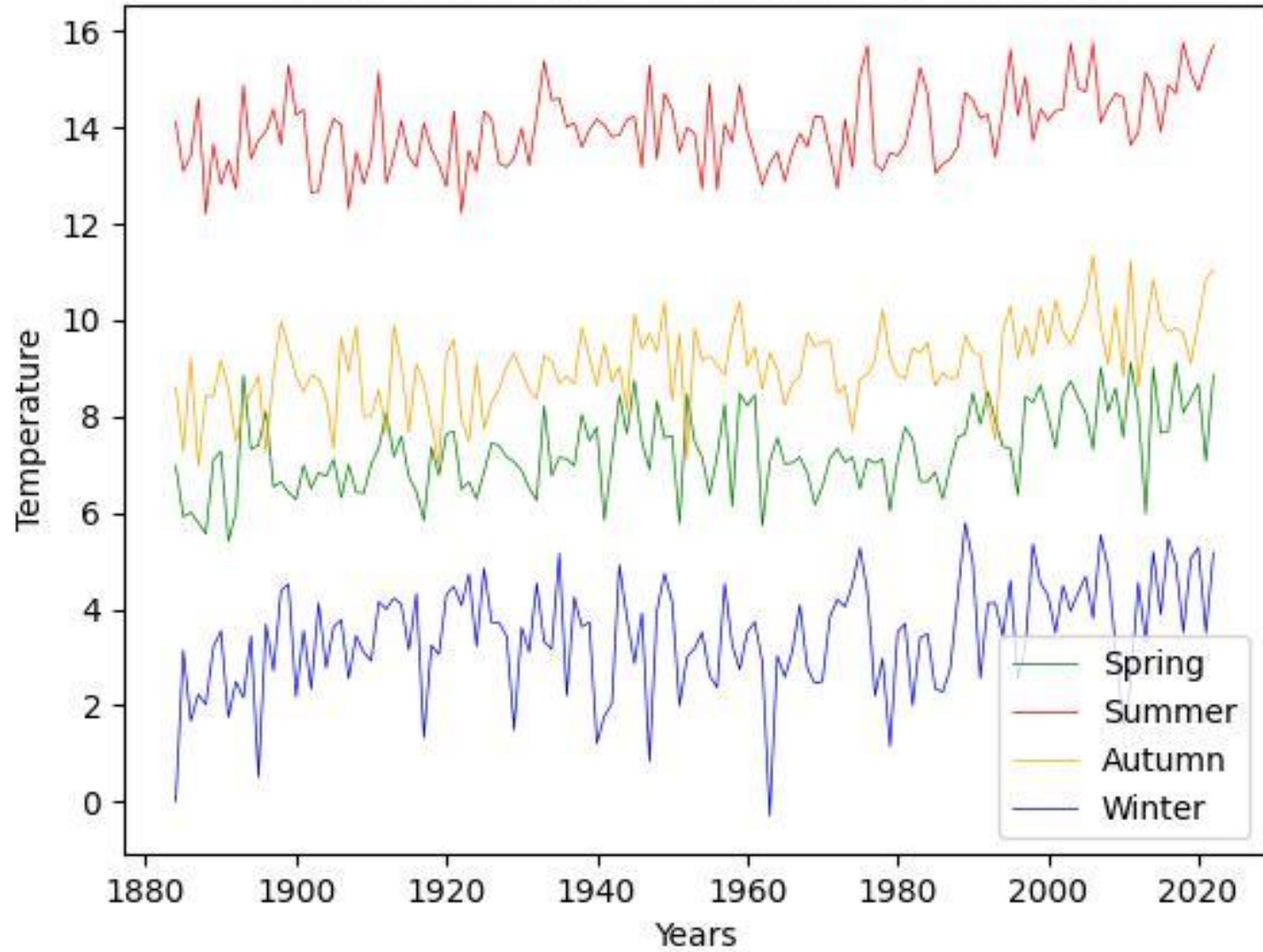
Mean Decade Temp



Minimum Mean Annual Temp in Decade



### UK Mean Seasonal Temperatures per Decade



## Warmest Months on Record

Jan	Feb	Mar	Apr	May	Jun	Jul	Aug	Sep	Oct	Nov	Dec
1916	1998	1938	<b>2011</b>	<b>2017</b>	<b>2023</b>	<b>2006</b>	1995	<b>2006</b>	<b>2001</b>	1994	<b>2015</b>
<b>2007</b>	<b>2019</b>	1957	2007	2008	1976	<b>2018</b>	1997	<b>2021</b>	1995	<b>2011</b>	1934
1989	1990	<b>2012</b>	<b>2014</b>	<b>2018</b>	1940	1983	1947	1949	1969	<b>2022</b>	1988
1898	1945	<b>2017</b>	1943	1992	<b>2018</b>	<b>2013</b>	1975	<b>2016</b>	1921	<b>2015</b>	1974
1921	1961	1948	<b>2020</b>	<b>2022</b>	1970	1995	<b>2022</b>	1895	<b>2005</b>	1899	1900

## Wettest Months on Record

Jan	Feb	Mar	Apr	May	Jun	Jul	Aug	Sep	Oct	Nov	Dec
1928	<b>2020</b>	1981	<b>2012</b>	1967	<b>2012</b>	1998	1912	1950	1903	<b>2009</b>	<b>2015</b>
<b>2008</b>	1990	1903	<b>2000</b>	<b>2021</b>	<b>2007</b>	<b>2009</b>	1917	1918	<b>2000</b>	1951	1929
<b>2014</b>	<b>2002</b>	1994	1998	1924	1980	1939	1992	1981	1967	1940	1914
1995	1997	1979	1947	1986	1912	1936	<b>2004</b>	1927	1998	1929	1999
<b>2016</b>	<b>2014</b>	1947	1920	1925	1998	1888	1956	1935	<b>2020</b>	1954	1993

Dates in Bold: Since 2000

Dates in Red: Since 2010

Mar, Apr, May

5 Warmest Springs	
<b>2017</b>	9.12°C
<b>2011</b>	9.12°C
<b>2014</b>	9.02°C
<b>2007</b>	9.02°C
<b>2022</b>	8.87°C

Jun, Jul, Aug

5 Warmest Summers	
<b>2018</b>	15.76°C
<b>2006</b>	15.76°C
<b>2003</b>	15.74°C
<b>2022</b>	15.71°C
1976	15.70°C

Sep, Oct, Nov

5 Warmest Autumns	
<b>2006</b>	11.35°C
<b>2011</b>	11.22°C
<b>2022</b>	11.05°C
<b>2021</b>	10.84°C
<b>2014</b>	10.84°C

Dec, Jan, Feb

5 Warmest Winters	
1989	5.79°C
<b>2007</b>	5.54°C
<b>2016</b>	5.47°C
1998	5.35°C
<b>2020</b>	5.28°C

5 Wettest Springs

1979	327mm
1947	326mm
1986	313mm
1913	311mm
<b>1920</b>	307mm

5 Wettest Summers

1912	381mm
<b>2012</b>	378mm
<b>2007</b>	356mm
1985	354mm
1956	354mm

5 Wettest Autumns

<b>2000</b>	509mm
1954	466mm
1935	464mm
1981	455mm
1984	440mm

5 Wettest Winters

<b>2014</b>	540mm
<b>2016</b>	505mm
1995	498mm
1990	482mm
<b>2020</b>	474mm

Dates in Bold: Since 2000

Dates in Red: Since 2010